



Messiah



Messenger

February

2015

Volume 53, Issue 2



ANNUAL MEETING HIGHLIGHTS

Ash Wednesday and Lenten information on Page 4 of this newsletter.

Excerpts from Pastor Heller's Annual Report

"Getting to Know You All Better"

The primary challenge of any new pastor (besides figuring out where they left their Book of Concord) is getting to know the members of the congregation that they have been called to serve.

I'll be honest, it isn't always easy to remember everybody's name and who is related to whom, but I've been blessed to get to know many of you just a bit in our brief time together.

I'm hoping that we have more opportunities to do so moving forward.

To that end, I'm encouraging each of you to **attend a cottage meeting of your choice held in the fellowship hall in the coming weeks and months.**

I want to hear more about what makes you passionate about Messiah, and what your hopes and dreams are for the mission of the church in the years ahead.

While I may be your pastor, each of you has a say in what Messiah will become over the next several years."

2015-2016 Church Council Officers

Pastor:	Christopher Heller
President	Ron Kulju— Term: 2015-2016
V. President	Jean Paananen—Term: 2015-2017
Secretary	Cassandra Osterloh –Term: 2015-2017
Treasurer	Rosemary Butler—Term: 2014-2016
Fin. Secretary	Barbara Bachechi—Term: 2015-2016
Bldg Maint.	Carlo Bachechi—Term: 2014-2016
Member	Orman Paananen—Term: 2015-2017
Member	Rob Maranville—Term: 2014-2016
Member	Tom Reid—Term: 2014-2016

CONGRATULATIONS

AND

THANK YOU TO MEMBERS GOING OFF THE COUNCIL:

DARRON KNIGHT

SUSAN UTEGG

EDNA JONES.

Minutes and annual reports from the January 25th annual meeting are available in the church office to all members. All 2014 reports were approved as well as the 2015 budget.

ELISSA AND PASTOR CHRIS HELLER



WELCOME

INSTALLATION OF PASTOR CHRISTOPHER HELLER ON SATURDAY, JANUARY 24TH AT 11:00 A.M. WITH BISHOP GONIA





February 2015

As We Forgive Those...

A few weeks ago, I noticed an article that a friend a couple years younger than myself posted. The headline was, "The Most Entitled Generation Isn't Millennials." Being a borderline Millennial myself, I felt a bit justified by that headline. Not only were Millennials not the most entitled generation, the generation that most often complains about the "lazy, entitled Millennials," the Baby Boomers, were! I read the article with great comfort that somebody agrees that I'm not the problem and that somebody else was. Smiling slightly smugly to myself, I pressed the "share" button and passed the article on to others, so that the grievance of Millennials being smeared by an older generation could be passed on to others.

A few hours later, though, I looked back on the article and the justification I felt when I read it, and realized that just maybe I had contributed to part of a larger problem. You see, I might truly feel that Millennials get a bad rap, and that perhaps Baby Boomers should take more responsibility for how their actions have affected succeeding generations, but I was feeding into the cycle of resentment that has become a major industry in our society over the past several years.

Resentment is easy. You take two opposing positions, and you gin up an argument on why one is maligned and the other is at fault. You see it in all the inconsequential things that make people angry, especially in our national media. Did you hear that <insert public figure of a specific political persuasion> chose not to meet with <insert special interest group of opposing political persuasion or sympathetic cause>? What a major snub! It's offensive! You don't have to watch more than a few hours of cable news (Fox News and MSNBC often referred to as the main culprits) to catch more than one example of this occurring in a given day. Not only does it push news, and often a certain narrative, but it also raises mistrust between people of different political, generational, religious, or ethnic persuasions, depending on the narrative in question.

Not only is resentment used as a major tool in our national media, it's also used by other groups as fundraising tactics. I can't count the number of emails I've gotten from different special interests groups bemoaning something that a person or group of opposing viewpoint said or did. And the emailing group can only respond if I donate five dollars right now! How many of us have clicked on a link on a webpage that has a title such as, "You Won't Believe What Paris Hilton's Second Cousin Once Removed Has Done Now!" and found that the article has no real content, just a series of ads, and that your click has only guaranteed a few extra cents in the bank account of the "content" creator? It feeds into this same resentment culture. Let's be honest. Who doesn't have a strong distaste for Paris Hilton's second cousin once removed?

Unfortunately, resentment culture isn't just present in our media, it's also present in our homes and in our church. Sometimes we don't get along well with the people we share seats with in worship. Maybe they have different ideas of what's best for Messiah. Maybe they've offered opinions that you find naive or offensive. As it is, there are times that we choose to hold on to that resentment, and use it to pounce on someone we disagree with, regardless of whether the issue at hand is critical or not. Kind of makes you wonder how others might view Christianity through these incidents.

During his message at my installation, Bishop Gonia said something that probably indicts a lot of us here at Messiah, at least occasionally. He said, "It's funny how we can proclaim forgiveness each and every week in our worship and then be reluctant to forgive one another when we've been wronged." I'm guilty as everybody else in that department, and I think it starts with my urge to put my interests and views above everybody else's. I'm not saying that there are no causes that are worth standing up for and being passionate about. I'm not saying that there aren't times where a person is definitely wronged. But maybe if we weren't so quick to press the "share" button when feeling justified, maybe if we took a step back to look at the whole of a situation rather than a media driven narrative, we would be able to dial back the resentment found in this world, and find that what unites us, hope for all creation, is far greater than any grievance that we might encounter.

Peace in Christ,
Pastor Chris

Lent reminds us that the way to righteousness lies through the desert of confronting our unrighteousness! Undertaken in humility, our 40-day pilgrimage could take us to that place where we can be honest about our shortcomings, knowing that our honesty will not run God off but will be the occasion for God's continuing affirmation of us as beloved children.

Originally posted Feb. 23, 2012, at ELCA Southeastern Synod Blog. Republished with permission of the author. Find a link to Julian Gordy's entry at ELCA Southeastern Synod Blog at Lutheran Blogs. - See more at: http://www.elca.org/en/Living-Lutheran/Blogs/2013/03/~link.aspx?_id=D4D5CC7440FF43D4B10DB5A1AF883666&_z=z#sthash.a7ZfnZGO.dpuf

February 2015 Lenten Events.

Shrove Tuesday, with a pancake supper, will be on February 17th from 5:30 to 6:30 p.m. provided by Messiah's Lutheran Men.

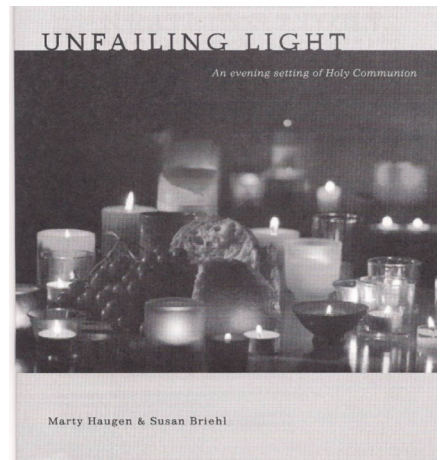


SHROVE TUESDAY



Ash Wednesday on February 18th will have two worship services, on at 11:00 a.m. and the evening worship at 7:00 p.m. both with communion

2015 Lenten Worship Services are at 11:00 a .m. and 7:00 p.m. with Communion.
Please stay for the lunch at 11:30 a.m. or come early to enjoy a warm supper.



Lenten Service Book



- * A Soup and Bread luncheon and supper sign up sheet will be posted on the bulletin board.
- * The lunch begins at 11:30 a.m. and the supper at 6:00 p.m. Please join us.

Confirmation Class

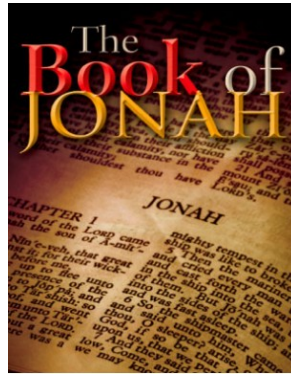


Confirmation Class on Sunday, February 1st at 9:30 a.m. In the Pastor's office. Please check with Pastor Chris for upcoming dates.

NEW Thursday morning Bible Study with Pastor Heller at 10:00 a.m. on February 5th. The study will continue on the 19th and 26th.

The Book of Jonah is not just a "big fish" story.

Plan to be here for an exciting study of the Old Testament book. We will have coffee and good fellowship.

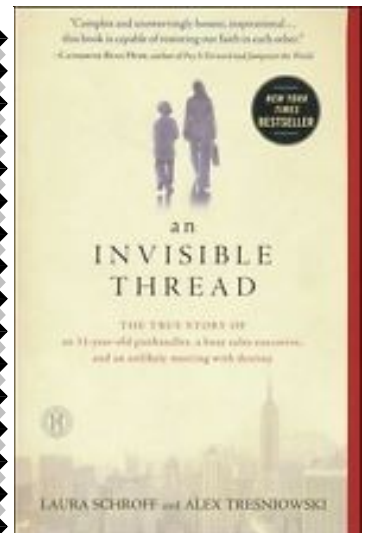


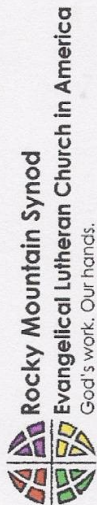
Remember..... February is also Valentine month.....



Flowers and cards for those you love.

Messiah Book Club members will be reading "An Invisible Thread" A true story of an 11 year old panhandler. We meet on Saturday, February 28th at 10:00 a.m. All are Welcome.



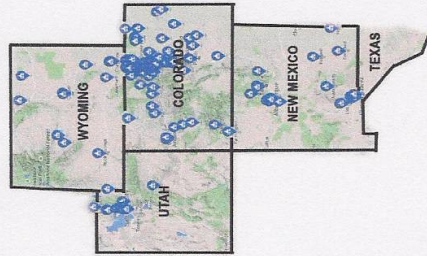


In 2015, **\$1,175,000** will fund Rocky Mountain Synod work as "Church Together" and **\$1,175,000** will be sent on to join with offerings from the other 64 Synods to fund ELCA Churchwide ministries.

We are Church: Better Together

Thanks to your generosity, and in unity with the other 165 congregations in the Rocky Mountain Synod, the impact of YOUR CONTRIBUTION reaches far beyond your walls.

Mission Support is one of the primary ways that we are church together. When offerings flow from each congregation to the Rocky Mountain Synod and to the ELCA churchwide organization, it brings vital resources to those in need, equips leaders with solid biblical and theological education, and does so much more.



In our Rocky Mountain Synod, 2015 offerings from congregations (called "mission support") are expected to be **\$2,350,000**, and these gifts are received with gratitude! 50% of that mission support is passed on for the churchwide mission of the Evangelical Lutheran Church in America. The total 2015 Rocky Mountain Synod anticipated income of **\$2,292,112** also includes **\$195,812** from the ELCA which is returned to the RMS and **\$246,300** in reserve, endowment, grant, gift, and interest income.

Take a look at the significance of all we are doing as "Church Together!"

Of every dollar given in mission support
 ◀ half goes to RMS ▶ half goes to ELCA ▶



Mission Support propels your offering across the synod, throughout the ELCA, and around the world to the places where the need is greatest.



COORDINATION AND SUPPORT OF MINISTRIES

- Facilitating communication and support to ministries across the church.
- Managing relationships and activities between the synod and churchwide organization.
- Providing for outdoor ministry, servant corps, and social service organizations.
- Inviting congregations and leaders into wider participation and collaboration.
- Starting new congregations and worshipping communities.
- Renewing the ministries of existing congregations each year.
- Nurturing faith communities to grow and proclaim the good news of God's grace.
- Accompanying congregations through a healthy transition process.



SUPPORTING CONGREGATIONS AND EVANGELICAL OUTREACH

- Expanding youth and young adult ministries.
- Preparing, recruiting and supporting church leaders, educational and teaching networks.
- Encouraging healthy leaders.
- Sustaining eight ELCA seminaries, 26 colleges, 180 campus ministries, 1,530 early childhood centers, and 257 elementary schools.



BRINGING FORTH AND SUPPORTING LEADERS

- Assisting global companion churches in building their capacity for mission and ministry in over 90 countries.
- Developing and cultivating ecumenical and interfaith relationships.



GLOBAL AND ECUMENICAL RELATIONSHIPS

- Inspiring people to be good stewards.
- Interpreting the mission and ministry of the church and its finances.
- Developing financial resources to fund God's work.



STEWARDSHIP AND MISSION FUNDING

- Caring for God's creation through study, deliberation, and action.
- Serving in response to God's love through social ministry organizations.
- Witnessing to justice as the voice of the powerless.
- Meeting the needs of the hungry and victims of disaster.



STEPPING FORWARD AS A CHURCH SERVING OTHERS

- Making decisions together through governance procedures including the Rocky Mountain Synod Council, the ELCA Church Council, the RMS Synod Assembly, the ELCA Churchwide Assembly, and the ELCA Conference of Bishops.



GOVERNANCE

Learn more about the Rocky Mountain Synod at rmselca.org. Click on "email newsletter" to subscribe. Like us at [facebook.com/rmselca](https://www.facebook.com/rmselca) to stay connected.



Lutheran Advocacy Ministry-NM Bishop's Legislative Luncheon February 10

The Lutheran Advocacy Ministry-NM Bishop's Legislative Luncheon will be Tuesday, February 10. Make plans to attend and be sure to make your reservation (or a reservation for a group from your congregation!) to attend this annual gathering which will begin at 12:30 pm at La Fonda in Santa Fe.

Rocky Mountain Synod Bishop Jim Gonja will speak at the luncheon and will also share a message with us during the Issues Briefing in the morning prior to the luncheon. The day will begin at 9:00 am at Christ Lutheran Church (1701 Arroyo Chamiso) with registration, fellowship and an opportunity to learn more about the issues for which Lutheran Advocacy Ministry-NM will be advocating in 2015.

The cost of the luncheon is \$30 person (\$25 per person when 4 or more people from a congregation or organization make reservations together). If you are only attending the morning issues briefing, the cost is \$5. Please contact Lutheran Advocacy Ministry-NM (phone 984-8005 or email info@lutheranadvocacynm.org) to make reservations or for more details. The deadline for reservations is February 5.

PRAYER SHAWLS

Have you heard of Prayer Shawls ?

The shawls are blessed by the congregation and given to a person who has been hospitalized or had a death of a close family member.

(Messiah had a member who embroidered blankets for this purpose. We do not have any more blankets and no one to do the embroidery.)

Members with the talent of knitting or crocheting are wanted to get this ministry started. Prayers are stated as these items are made. The whole congregation prays over the shawl when it is ready to go to an individual.

This ministry is designed to give love and comfort and the feel of concern for the individual by Messiah Lutheran Church.

Please see Pastor Chris if you are interested in creating guidelines for recipients and/or making the shawls.



MISSIONS, INVITATIONS AND HAPPENINGS OF MESSIAH LUTHERAN CHURCH WOMEN

Women of the ELCA Purpose Statement

As a community of women created in the image of God,

Called to discipleship in Jesus Christ

And Empowered by the Holy Spirit,

We commit ourselves to grow in faith, affirm our gifts

support one another in our callings, engage in ministry

and action, and promote healing and wholeness in the church,

the society, and the world.

“LOVING—HEART TO HEART”

February 14th is our meeting with Bible Study by Irene Aldredge.
Devotions and Hostess by Lorraine Davis.

Please come--All are welcome.

BARRELS FOR THE STOREHOUSE

There are two barrels in the Narthex (one for food items and one for quilts and clothing) close to the refreshment table.

Please place your donations in the appropriate barrel.

Messiah Lutheran Church Women are now donating peanut butter and no longer donating childrens underwear.

A major error happened when the barrels were delivered.

*The box of supplies for the **Homeless** was also picked up and taken to the Storehouse. MLCW regrets this and made a check for the **Homeless committee** to replace the supplies.*

Any questions please contact Darlene Foster, 298-4653

“Transforming Life and Faith” by Carol Schersten LaHurd Ph.D.

February Making Conversion Last

March Suffering and Endurance

April Inspired by the Risen Lord

May The Church Transforming and Renewing.

In His Service,

Darlene Foster- President

Irene Aldredge- Secretary

Dotty Dahl-Treasurer

Missions Growth- Lorraine Davis

Action-Charlotte Moritomo

Communt- Dotty Dahl

Historian-Eloise Kesatie


Prayer Chain-Irene Aldredge

February 2015 MESSIAH LUTHERAN CHURCH

Fellowship Coffee and Snacks

Snacks for Praise Service
40 Servings

Snacks for Traditional Service
45 Serving

Date	Praise Fellowship Set-up	Praise Service Snacks	Coffee and Snacks to the Fellowship Hall	Traditional Service Snacks	Library/ Fellowship Clean-up	
February 01	Irene and Gene Aldredge		Jean and Orman Paananen	Marion and Ron Kulju	Marion and Ron Kulju	
February 08	Irene and Gene Aldredge	Barbara and Carlo Bachechi	Jean and Orman Paananen	Ellen Dobson and Ruby Driver	Ellen Dobson and Ruby Driver	
February 15	Irene and Gene Aldredge	Susan Utegg	Jean and Orman Paananen	Debbie and Doug Bolling		
5:30 p.m. February 17 Shrove Tuesday		Pancake supper provided by the Men's group				
February 22	Irene and Gene Aldredge	Pat and Chuck Danielson	Pat and Chuck Danielson	Anna May and Gene Currier	Anna May and Gene Currier	



Daniel 9:3
"Then I turned to the Lord God, to seek an answer by prayer and supplication with fasting and sackcloth and ashes.

February 2015 Flowers

February 01 Irene and Gene Aldredge

February 08 Eloise Kesatie

February 15

February 22 Betty Hauge

Please sign up for flowers



February

2015

Worship Assistants

DATE	Assisting Minister	Greeter	Ushers	Counters
February 01	Gene Aldredge Reader: Herb Biermann	Eloise Kesatie	Jean and Orman Paananen	Gene Aldredge
February 08	Ron Kulju	Hauge Family	Hauge Family	Ron Kulju
February 15	Ellen Dobson	Pat Raquet	Pat and Jim Raquet	Ellen Dobson
Ash Wednesday February 18	Gene Aldredge	Gene Aldredge	Irene Aldredge	
February 22	Orman Paananen	Lorraine Davkis	Lorraine Davis and Charlotte Moritomo	Orman Paananen

Contemporary Worship Readers for

February

February 01 Diane Corry
 February 08 Susan Uttegg
 February 15 Andy Jones
 February 22 open



Irene Aldredge



February

2015

Sun	Mon	Tue	Wed	Thu	Fri	Sat
1 Spare change 8:30 a. m. Contemporary Worship 9:30 a. m. Education Hour 9:30 a.m. Confirmation 10:30 a.m. Traditional Worship 12:00 p.m. Handbells rehearsal	2	3 9:30 a.m. Sew and Share 12:00 p.m. Pastors' Text Study 5:30-7:00 p. m. "Theology on Tap"	4 5:30 p.m. Contemporary Rehearsal	5 10:00 a.m. Bible Study	6	7 9:00 a.m. Church Work Day
8 Council Installation 8:30 a. m. Contemporary Worship 9:30 a. m. Education Hour 10:30 a.m. Traditional Worship	9	12:00 p.m. Pastors' Text Study 7:00 p.m. Church Council	11 6:00-8:00 Craft Class	12 No Bible Study	13	14 Valentine Box 9:30 a.m. MLCW Bible Study
15 8:30 a. m. Contemporary Worship 9:30 a. m. Education Hour 9:30 a.m. Congregational Care 10:30 a.m. Traditional Worship	16	17 Shrove Tuesday 9:30 a.m. Sew and Share 12:00 p.m. Pastors' Text Study 5:30-6:30 p.m. Pancake Supper	18 Ash Wednesday 11:00 a.m. Worship Service 7:00 p.m. Worship	19 10:00 a.m. Bible Study	20 9:30 a.m. Newsletter Team	21
22 8:30 a. m. Contemporary Worship 9:30 a. m. Education Hour 10:30 a.m. Traditional Worship	23	24 12:00 p.m. Pastors' Text Study	25 11:00 a.m. Lenten Worship 11:30 a.m. Soup and Bread Lunch 6:00 p.m. Soup and Bread Supper 6:00-8:00 Craft Class 7:00 Lenten Worship	26 10:00 a.m. Bible Study	27	28 10:00 a.m. Messiah Book Club



Blank rectangular box for writing.

Large dotted rectangular box for writing, with the word "BAPTISMS" in a decorative font at the top.

BAPTISMS



Large blank rectangular box for writing.




Large blank rectangular box for writing.



Small blank rectangular box for writing.

CHURCH COUNCIL



COUNCIL NOTES FOR FEBRUARY NEWSLETTER

- * Pastor would like to start "Cottage Meetings". 5 or 6 families will meet and host in the Fellowship Hall.
- * Carlo did: thawed pipes, general cleanup.

Messiah Lutheran Church members are invited to review the church council's meeting information. The binder is located in the church office. All council meetings are open to members.

Average Attendance

November 2014

Contemporary Worship Average—29
Traditional Worship Average—31

December 2014

Contemporary Worship Average—33
Traditional Worship Average—35
Christmas Eve Worship—100

LOOSE CHANGE FOR WORLD HUNGER



The **FIRST** Sunday of **EVERY** month , bring your loose change and place in the offering plate. This is collected and sent in for **World Hunger!**

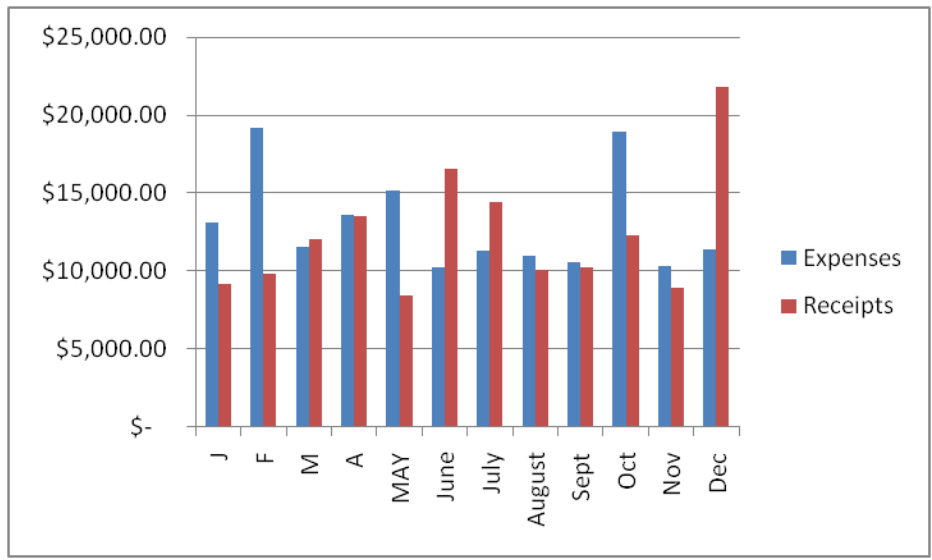
Report of the Treasurer

Financial Report, for the Month Ending December, 2014 Submitted by: Rosemary Butler, Treasurer

BANK ACCOUNT BALANCES:

Savings (Money Market) Account Balance: (After transfer of \$13,000):	\$	\$	17,837.88
BANK ACCOUNT BALANCE		\$	19,519.32

Money Market Transfer:	\$		
		13,000.00	
NEW PASTOR EXPENSE	\$		
		<u>(9,865.97)</u>	*See below
Balance of MM Funds Trans-	\$		
fer		3,134.03	
Less: balance of Funds transferred from MM Account after expenses		\$	(3,134.03)
Subtotal Account Balance		\$	16,385.29
(Less: Designated Funds Balance)		\$	(2,927.00)
General Funds Balance		\$	13,458.29



REMEMBER THE GIVING TREE GIFTS TO A FAMILY AT MCCULLUM ELEMENTARY?

HERE ARE THE CHILDREN'S PICTURES



HERE ARE THE THANK YOU NOTES. ALL WILL BE POSTED ON THE BULLETIN BOARD

Joseanna

Cezard



Isaiah

Elijah

From the Children:

Thank you for the clothes and Jacket. It is really warm and really cool. And the shirts I greatly appreciate. It is so much. Thank you

From Joseanna

Thank you for all your help. That was very nice of you. Thank you for giving us clothes for my and my brother. When I saw it, I was really WOWED and my brother was WOWED too. And thank you again for the clothes and beanie. My brother like it a lot that he screamed. And I screamed too. So I like it a lot. Thank you Sincerely,
Joseanna

Members of Messiah Lutheran Church,

The Staff of McCollum Elementary thank you for your generosity. Your contribution to the health and wellbeing of our students greatly adds to their educational success and security. We are appreciative of your partnership in the endeavor to educate our young people.

We wish you all a Happy New Year 2015 .

Most Sincerely,

Carrie McGill, Principal
& Staff

Church Website! is www.messiahbq.org. You may also listen to Pastor Chris Heller's sermons on the website
You may also reach us on Facebook.

The website has up to date information about our church, our synod, and current activities.

Sunday Bible Readings for February 2015

Sunday, February 01
Deuteronomy 18:15-20
Psalm 111
1 Corinthians 8:1-13
Mark 1:21-28

Ash Wednesday, February 18
Joel 2:1-2, 12-17
Psalm 51:1-17
2 Corinthians 5:;20b—6:10
Mark 6:1-6, 16-21

Sunday, February 08
Isaiah 40:21-31
Psalm 147:1-11, 20c
1 Corinthians 9:16-23
Mark 1:29-39

Sunday, February 22
Genesis 9:8-17
Psalm 25:1-10
1 Peter 3:18-22
Mark 1:9-15

Sunday, February 15
Transfiguration of Our Lord
2 Kings 2:1-12
Psalm 50:1-6
2 Corinthians 4:3-6
Mark 9:2-9

Messiah Messenger

is a monthly publication of Messiah Lutheran Church. The church is located at 11515 Lomas Blvd. NE, Albuquerque NM 87112.

Pastor: Rev. Christopher Heller
Email: mlcpastor@messiahbq.org

Director of Music: Tony Carson
Tony's email:
tony@messiahbq.org

Office Secretary - Shirley Lehde
Hours: -Tues.-Fri..9:00 am-2:00 pm
Shirley's email:
Shirley@messiahbq.org

Office Phone 505-299-3311

Church Website:
messiahbq.org

Bible Studies

Messiah Lutheran Church Women

Bible Study and gathering on the second Saturday of each month at 9:30 a.m.

'Theology on Tap'

meets the first Tuesday every month from 5:30 to 7:00 p.m. at Los Cuates on Manual. All are welcome!



Thursday Morning Bible Study meets at 10:00 a.m. in the meeting room.

If you have a prayer need, please call the church at 505-299-3311 to be added to the Messiah Lutheran Church's Prayer Chain as we pray in the name of Jesus.



LENTEN SERVICE SCHEDULE

February 17th Shrove
Tuesday, Pancake Supper from 5:30 to 6:30 p.m.

February 18th— Ash Wednesday
worship services at 11:00 a.m. and 7:00 p.m.

Wednesday Lenten Worship at 11:00 a.m. and 7:00 p.m.

Soup and Bread lunch at 11:30 a.m. and supper at 6:00 p.m.

Sunday School SCHEDULE

Education for All Ages

Children's Sunday School
9:30 a.m.

In the Fellowship Hall:

Education Hour
9:30 a.m. Sunday

Every Sunday Worship Schedule:

8:30 a.m. Contemporary
Worship with communion

10:30 a.m. Traditional
Worship with communion



**February 18th– Ash
Wednesday worship
services at 11:00 a.m.
and 7:00 p.m.**



Worship Times

**Contemporary Worship with
communion at 8:30 a.m.**

**Traditional Worship with
communion at 10:30 a.m.**



**February 17th Shrove
Tuesday, Pancake Supper from
5:30 to 6:30 p.m.**

**Wednesday Lenten Worship at
11:00 a.m. and 7:00 p.m.**

**Soup and Bread lunch at 11:30
a.m. and supper at 6:00 p.m.**

Messiah Messenger

A monthly newsletter of February 2015

**Messiah Lutheran Church
11515 Lomas Blvd
Albuquerque, NM 87112
Phone: 505-299-3311**



Our Mission: *Caring For and Serving Others So All May Share in God's Love.*

February 2015